



# **A Global Approach for the Ex Field - IECEx**

**Industry Conference - Baseefa  
Buxton  
5 October 2005**

Chris Agius  
Secretary IECEx



**What is Ex ??**

**Why have IECEx ??**

**Management of IECEx**

**IECEx Financing**

**Immediate Challenges**

**What is the future??**



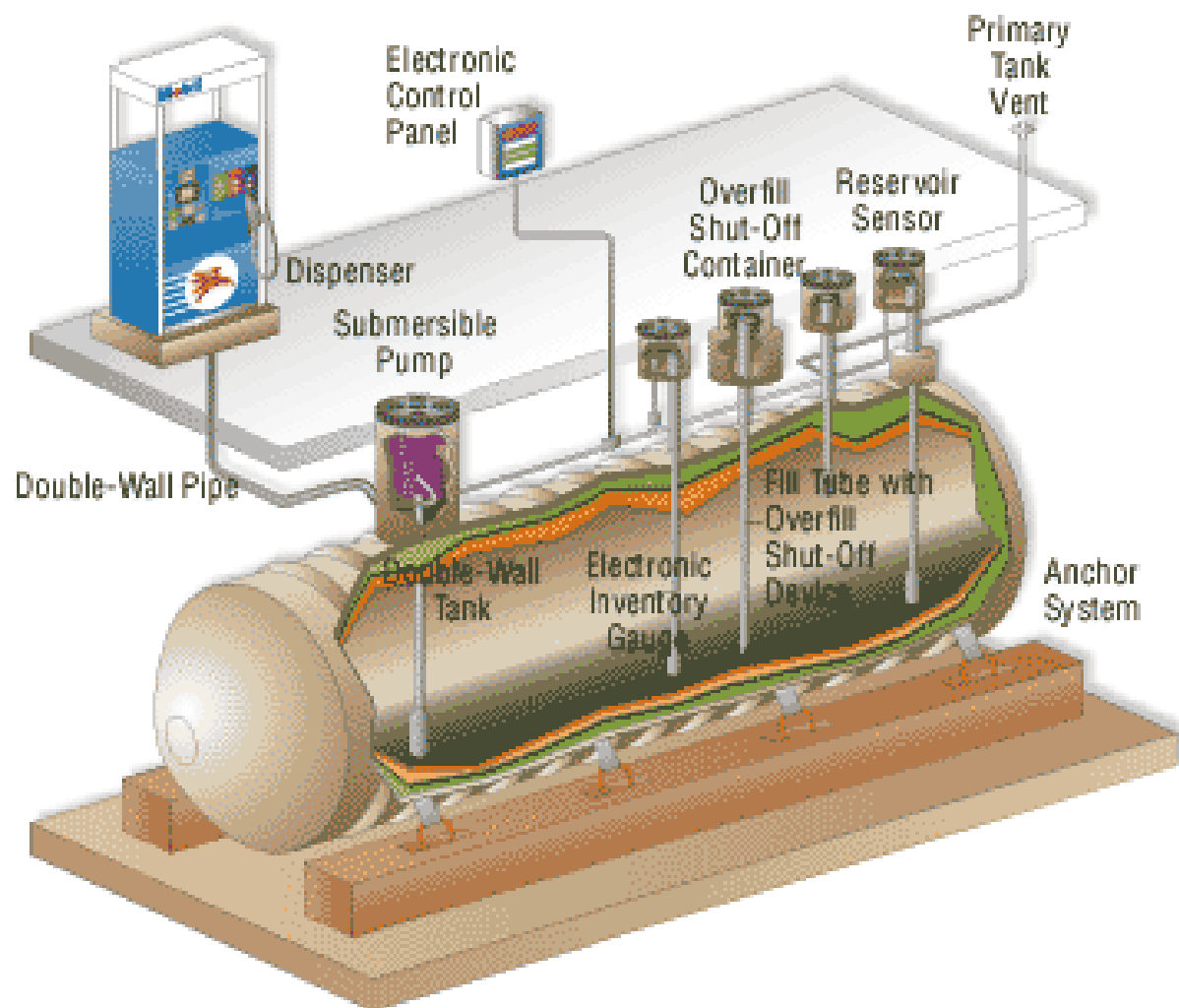
- ▶ Ex equipment is frequently found in these locations:
  - ▶ Automotive refuelling stations or petrol stations
  - ▶ Oil refineries, rigs and processing plants
  - ▶ Chemical processing plants
  - ▶ Printing industries, paper and textiles
  - ▶ Hospital operating theatres
  - ▶ Aircraft refuelling and hangars
  - ▶ Surface coating industries
  - ▶ Oil and gas tankers, drilling ship and FPSO (Floating Production Storage and Off-Loading Vessels)
  - ▶ Underground coal mines
  - ▶ Sewerage treatment plants
  - ▶ Gas pipelines and distribution centres
  - ▶ Grain handling and storage
  - ▶ Woodworking areas
  - ▶ Sugar refineries
  - ▶ Metal surface grinding, especially aluminium dusts and particles.

# Ex Equipment – Where ???



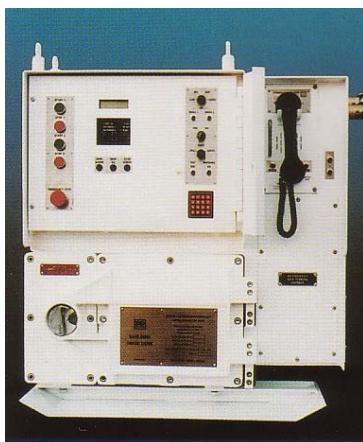


- ▶ Area Classification
- ▶ Equipment Conformance
- ▶ Installation Conformance
- ▶ Maintenance, Repair + Overhaul



| Ex Safety Concept                   | Symbol      | Type of protection – covered by <u>Standards</u>                                    |
|-------------------------------------|-------------|---|
| <b>Exclusion</b>                    | <b>DIP</b>  | Dust ignition protection. Also see new IEC 61241 series Ex tD, Ex pD, Ex mD etc     |
|                                     | <b>Ex m</b> | Encapsulation, IEC 60079 -18  |
|                                     | <b>Ex n</b> | Non-sparking (hermetically sealed devices, sealed devices and restricted breathing) |
|                                     | <b>Ex o</b> | Oil-immersion   |
|                                     | <b>Ex p</b> | Pressurized enclosure   |
|                                     | <b>Ex q</b> | Powder filled (sometimes called ‘sand filled’)                                      |
| <b>Explosion containment</b>        | <b>Ex d</b> | <b>Flameproof enclosure</b>   |
|                                     | <b>Ex n</b> | <b>Non-sparking (enclosed-break devices)</b>  |
| <b>Energy limitation</b>            | <b>Ex i</b> | Intrinsic safety, Ex ia + ib  |
|                                     | <b>Ex n</b> | Non-sparking (non-incendive components and energy limitation)                       |
| <b>Dilution</b>                     | <b>Ex v</b> | Ventilation   |
| <b>Avoidance of ignition source</b> | <b>Ex e</b> | Increased safety  |
|                                     | <b>Ex n</b> | Non-sparking (inherently non-sparking)  |
| <b>*</b>                            | <b>Ex s</b> | Special protection  |





| Ex Safety Concept            | Symbol      | Type of protection – covered by Standards   |
|------------------------------|-------------|---|
| Exclusion                    | DIP         | Dust ignition protection. Also see new IEC 61241 series<br>Ex tD, Ex pD, Ex mD etc  |
|                              | Ex m        | Encapsulation, IEC 60079  |
|                              | Ex n        | Non-sparking (hermetically sealed devices, sealed devices and restricted breathing) |
|                              | Ex o        | Oil-immersion   |
|                              | Ex p        | Pressurized enclosure   |
|                              | Ex q        | Powder filled (sometimes called 'sand filled')                                      |
| Explosion containment        | <b>Ex d</b> | <b>Flameproof enclosure</b>   |
| Energy limitation            | Ex n        | Non-sparking (enclosed-break devices)   |
|                              | Ex n        | Non-sparking (non-incendive components and energy limitation)                       |
| Dilution                     | Ex v        | Ventilation   |
| Avoidance of ignition source | Ex e        | Increased safety  |
|                              | Ex n        | Non-sparking (inherently non-sparking)  |
| *                            | Ex s        | Special protection  |







**The IEC Scheme covering Certification to Standards that relate to Apparatus for Explosive Atmospheres, to provide an Internationally accepted means of *demonstrating claimed compliance with IEC Standards***



# IEC Conformity Assessment Schemes

**International Electrotechnical Commission**  
**Form in 1906, Mission = International**  
**Standardisation in the Electrotechnology fields**

- **IECEE – CB and FCS Scheme**  
**[www.cbscheme.org](http://www.cbscheme.org)**
  
- **IECQ – Components**      **[www.iecq.org](http://www.iecq.org)**
  
- **IECEx- Explosive Atmospheres**   **[www.iecex.com](http://www.iecex.com)**

- ▶ Certificates are created by the ExCB “Live” on the IECEx Website via a secure area
- ▶ ExCBs can only issue IECEx Certificates to Standards they have permission for, i.e. within their scope of acceptance
- ▶ Complete certificate for public view and download.
- ▶ Search capabilities act as a “buyers guide of Ex products”.
- ▶ Available anywhere there is access to the Internet.
- ▶ [www.iecex.com](http://www.iecex.com)



- ▶ **1992** – Questionnaire to IEC National Committees
- ▶ **1996** – First meeting of the IECEx Management Committee (ExCC)
- ▶ **1997 – 1999** – First round of Peer assessments, development of operational rules and forms
- ▶ **1999** – Commence mutual acceptance of IECEx Test Reports (ExTRs), to fast-track national certification
- ▶ **2003** – IECEx internet based “On-Line” Certificates made available
- ▶ **2004** – Decision to expand Scope of IECEx operation to include Services



**IECEX Scheme  
Basic Rules IECEx 01**

**IECEX Certified Equipment  
Rules IECEx 02**

**IECEX Certified Service Facilities  
Rules IECEx 03 (in draft)**

**Other Future Service Offerings**

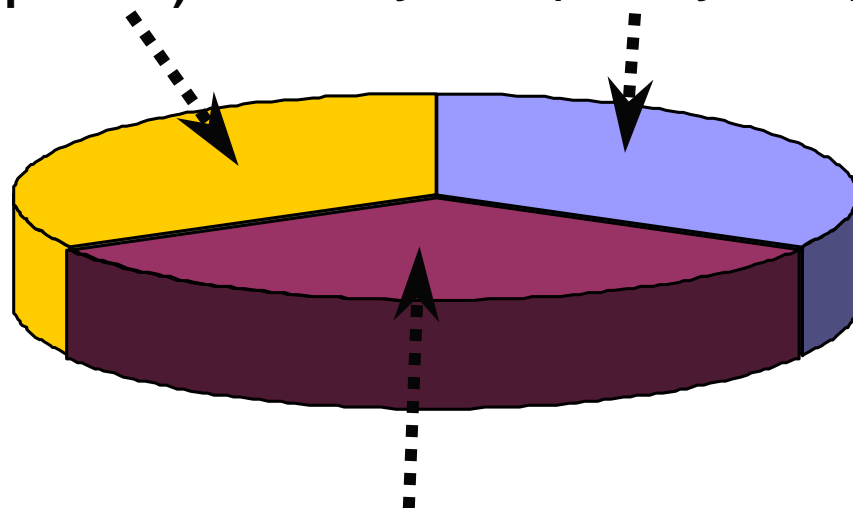


## **IECEX Certified Equipment Rules IECEx 02**

# Core Elements of IECEx Equipment Certification

Testing of Samples  
(Type Test)

Initial Assessment of  
Manufacturer's Quality  
System (factory audit)



On-going Surveillance  
(factory audits)

Back Edit Quit Save New Print

**IEC IECEx**

## IECEx Certificate of Conformity

INTERNATIONAL ELECTROTECHNICAL COMMISSION  
IEC Certification Scheme for Explosive Atmospheres  
for rules and details of the IECEx Scheme visit [www.iecex.com](http://www.iecex.com)

Certificate No.: **IECEx TSA 03.0000X** Issue No.: **0**

Status: ☐ Draft ☒ Current ☐ Suspended ☐ Cancelled

Date of issue: **2003-07-26** Page 1 of 4

Applicant Name: **SAMPLE CERTIFICATE**

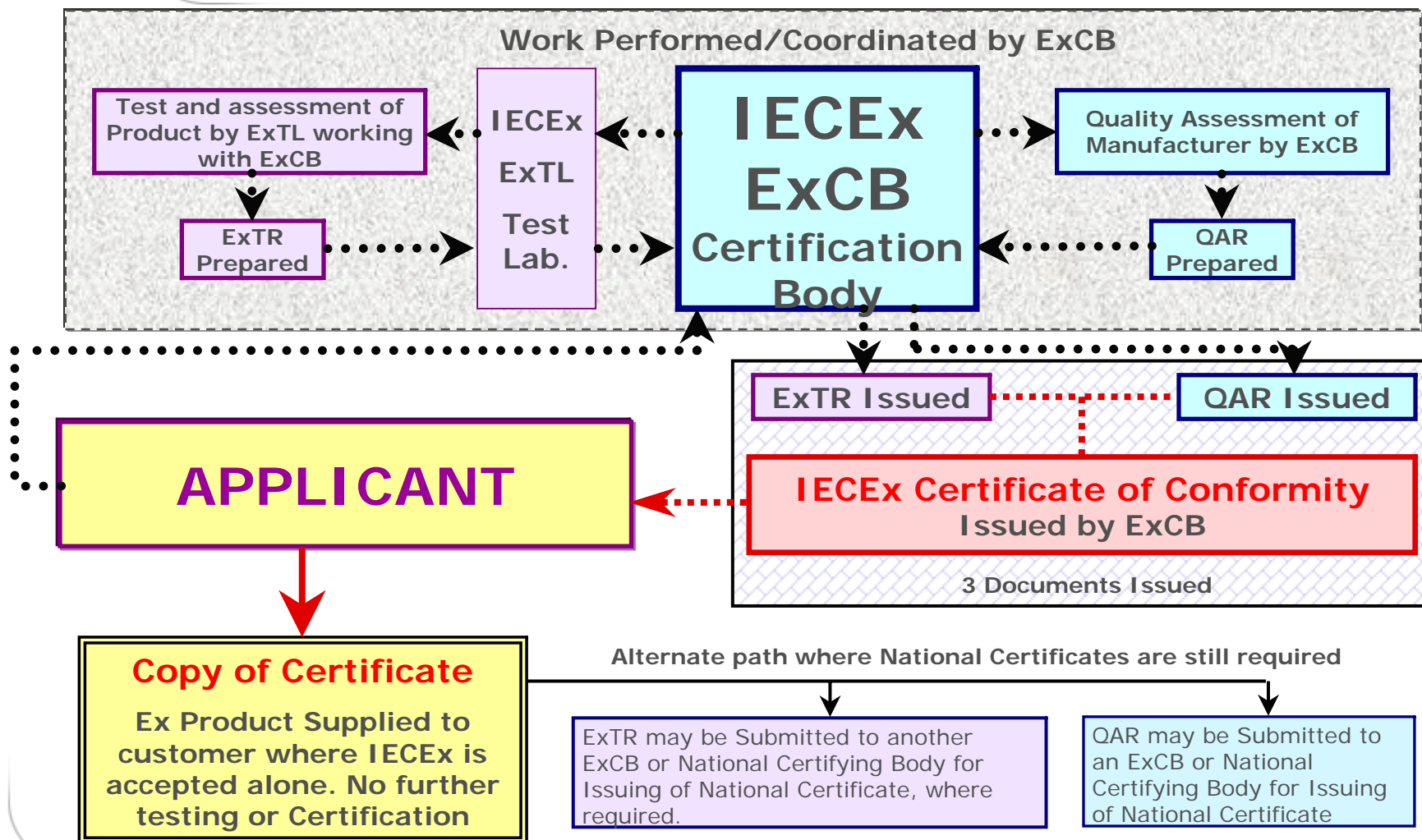
Applicant Address: **132 Sample Street  
SAMPLE TOWN NSW 2000**

Applicant Country: **Australia**

Electrical Apparatus: **Portable Radios**

Optional accessory: **Nil**







## IECEX Equipment Certification Procedure

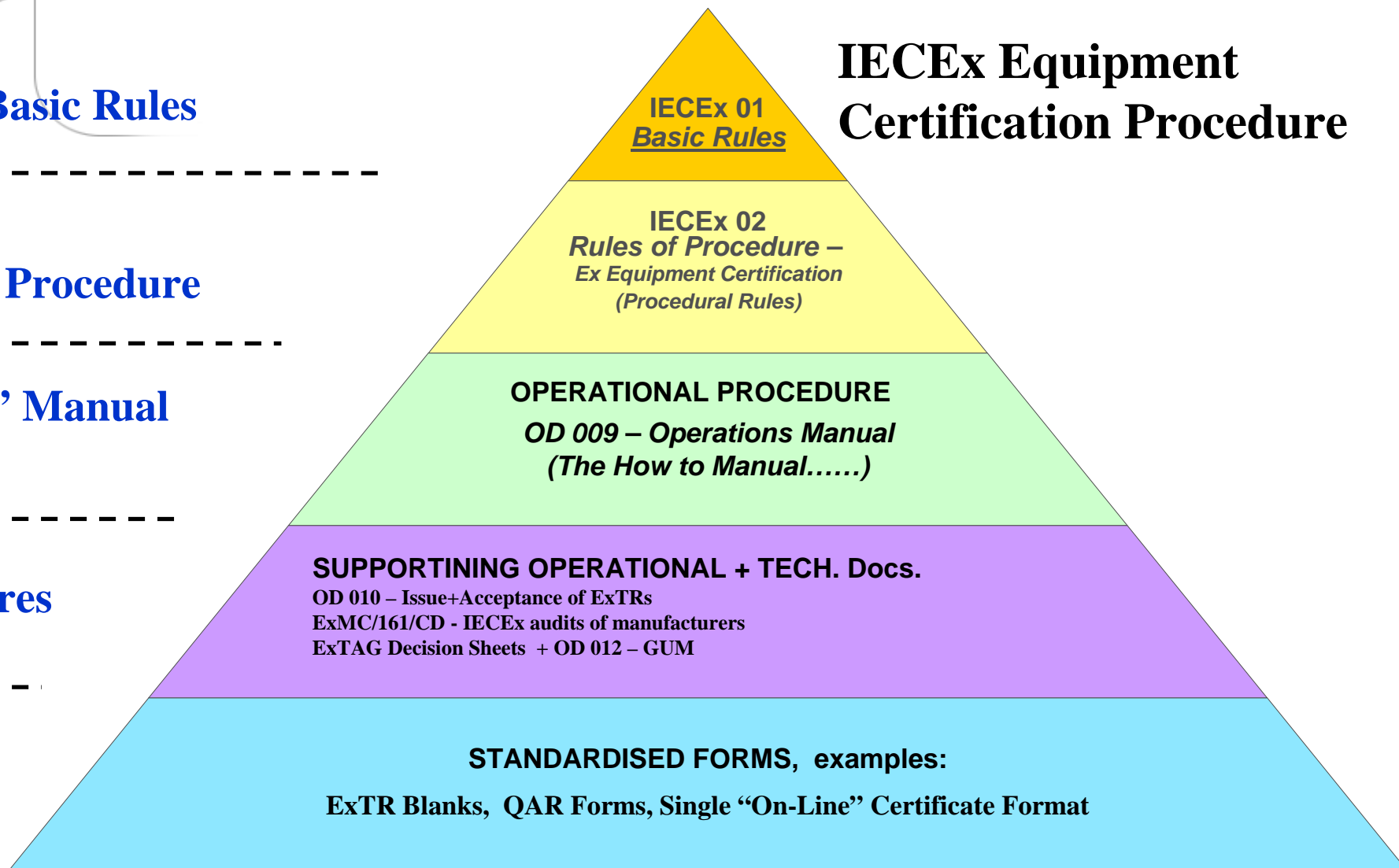
IECEX Basic Rules

Rules of Procedure

“How to” Manual

Procedures

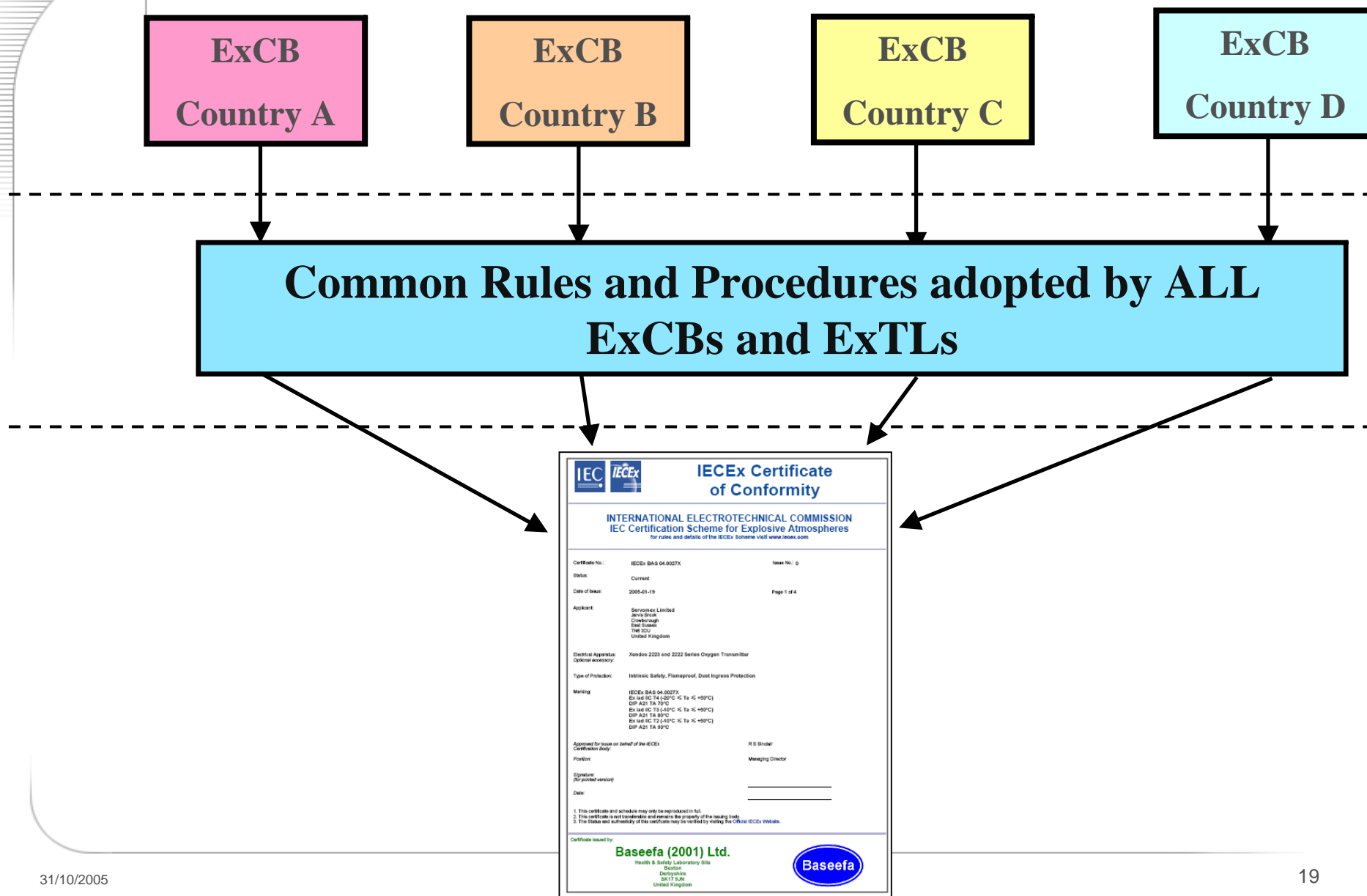
Forms





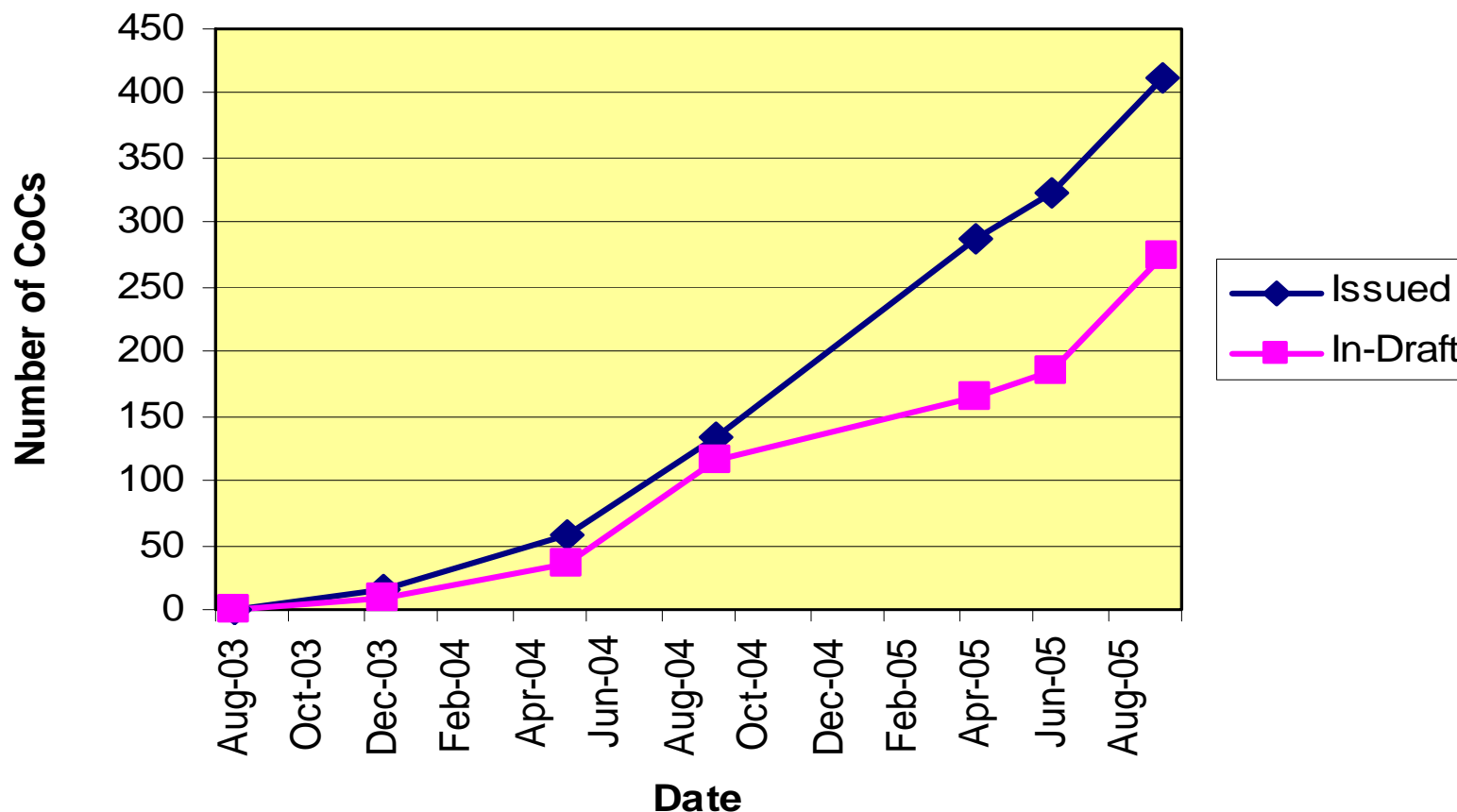
- OD001** IECEx Membership, ExCBs, ExTLs and Applicant bodies
- OD003** [ExMC/100/CD](#) – IECEx Assessment Procedures for the assessment and surveillance of ExCBs and ExTLs
- OD005** *IECEX Quality System Requirements for Manufacturers*
- OD006** IECEx Site Assessment Report for ass. of ExCBs, ExTLs
- OD007** IECEx ExCB Assessment Checklist for ISO/IEC Guide 65
- OD008** Exchange of information between ExNB and IECEx
- OD009** [IECEX Operations Manual](#)
- OD010** Guidance for the Preparation of IECEx Test Reports (ExTRs) by IECEx Certification Bodies (ExTRs) and the Processing of ExTRs by Receiving ExCBs

# The IECEx Way for Ex Certification



# No. of IECEx Equipment Certificates

## IECEx Certificates - Issued + In-Draft, Sep 05





- ▶ **List of Approved IECEx Certification Bodies**
- ▶ **Publications**
- ▶ **Members Area: Committee Documents, Directory etc**
- ▶ **On-Line Certificate System**
  - ▶ **View Original Certificates**
  - ▶ **Search capabilities**
  - ▶ **Certificate Status**

IECEX: Information - ExCBs - Microsoft Internet Explorer

File Edit View Favorites Tools Help

Back Forward Stop Reload Home Search Favorites RSS Print Mail W Yellow \* Mail People

Links Customize Links Free Hotmail Windows Windows Marketplace Windows Media

Canon Easy-WebPrint Print High Speed Print Preview Options

Address http://www.iecex.com/bodies.htm Go

**Information**

Information Publications Members' Area Online Certificates Contact Home

About IECEx  
FAQs  
Countries  
Officers  
ExCB's  
Meeting Schedule  
Links  
► IEC  
► IECQ  
► IECCE-CB

## Ex Certification Bodies (ExCBs)









The following organisations have successfully completed the IECEx assessment process and are approved to operate within the IECEx Scheme.


|                     |  |                               |  |
|---------------------|--|-------------------------------|--|
| Australia (AU)      | <a href="#">ITACS</a><br><a href="#">SIMTARS</a><br><a href="#">TestSafe</a> | Korea (KR)                    | <a href="#">KGS</a><br><a href="#">KOSHA</a> |
| Canada (CA)         | <a href="#">CSA</a>  | The Netherlands (NL)          | <a href="#">KEMA</a>                         |
| Germany (DE)        | <a href="#">EXAM</a><br><a href="#">PTB</a><br><a href="#">TÜV Nord</a>      | Norway (NO)                   | <a href="#">NEMKO</a>                        |
| Denmark (DK)        | <a href="#">UL/DEMKO</a>   | Russia (RU)                   | <a href="#">NANIO CCVE</a>                   |
| France (FR)         | <a href="#">LCIE</a>   | Sweden (SE)                   | <a href="#">SP</a>                           |
| United Kingdom (GB) | <a href="#">Baseefa</a><br><a href="#">Intertek</a><br><a href="#">SIRA</a>  | Slovenia (SI)                 | <a href="#">SIQ</a>                          |
| Hungary (HU)        | <a href="#">BKI</a>  | United States of America (US) | <a href="#">FM</a><br><a href="#">UL</a>     |

**More ExCBs  
coming – Check this  
list periodically**






|   |  |   |  |
|---|--|---|--|
| <p>Canon Easy-WebPrint  Print  High Speed Print  Preview</p> <p>Address  <a href="http://www.iecex.com/bodies.htm#Baseefa">http://www.iecex.com/bodies.htm#Baseefa</a>  Go</p> |  |   |  |
| <p><b>Denmark (DK)</b></p> <p><a href="#">UL International DEMKO A/S</a></p>  <p><b>Underwriters Laboratories Inc.®</b></p>  | <p>Steen Christensen<br/>UL International DEMKO A/S<br/>UL/DEMKO<br/>Lyskaer 8<br/>2730 Herlev<br/>DENMARK</p> <p>P O Box 514<br/>DK-2730 Herlev</p> <p>Tel: + 45 44 85 6372<br/>Fax: + 45 44 85 6555<br/>Email: <a href="#">Steen Christensen</a></p>           | <p>General Requirements IEC 60079-0<br/>Flameproof enclosures 'd' IEC 60079-1<br/>Pressurised enclosures 'p' IEC 60079-2<br/>Powder filling 'q' IEC 60079-5<br/>Oil-immersion 'o' IEC 60079-6<br/>Increased Safety 'e' IEC 60079-7<br/>Intrinsic Safety 'i' IEC 60079-11<br/>Type of protection 'n' (Non-Sparking) IEC 60079-15<br/>Encapsulation 'm' IEC 60079-18</p>  | <div> <ul style="list-style-type: none"> <li>• Check Scope</li> <li>• Note contact details</li> </ul> </div> |
| <p><b>France (FR)</b></p> <p><a href="#">Laboratoire Central des Industries Electriques LCIE</a></p>   | <p>Mr Michel Brenon<br/>Laboratoire Central des Industries Electriques<br/>LCIE<br/>33 Avenue du General Leclerc<br/>FR-92260 Fontenay-aux-Roses<br/>FRANCE</p> <p>Tel: + 33 1 40 95 5519<br/>Fax: +33 1 40 95 5520<br/>Email: <a href="#">Michel Brenon</a></p> | <p>General requirements (IEC60079-0)<br/>Flameproof enclosures "d" (IEC 60079-1)<br/>Pressurisation "p" (IEC 60079-2)<br/>Powder filling "q" (IEC 60079-5)<br/>Oil-immersion "o" (IEC 60079-6)<br/>Increased safety "e" (IEC 60079-7)<br/>Intrinsic safety "i" (IEC 60079-11)<br/>Type of protection "n" (IEC 60079-15)<br/>Encapsulation "m" (IEC 60079-18)<br/>Apparatus for combustible dusts (IEC 61241-1-1)</p>  |  |
| <p><b>United Kingdom (GB)</b></p> <p><a href="#">Baseefa</a></p>   | <p>Mr Ron Sinclair<br/>Baseefa (2001) Limited<br/>Baseefa<br/>Rockhead Business Park<br/>Staden Lane<br/>Buxton<br/>Derbyshire<br/>SK17 9RZ<br/>UNITED KINGDOM</p> <p>Tel: +44 1298 766600<br/>Fax: +44 1298 766601<br/>Email: <a href="#">Ron Sinclair</a></p>  | <p>General requirements (IEC60079-0)<br/>Flameproof enclosures "d" (IEC 60079-1)<br/><br/>Pressurisation "p" (IEC 60079-2)<br/>Powder filling "q" (IEC 60079-5)<br/>Oil-immersion "o" (IEC 60079-6)<br/>Increased safety "e" (IEC 60079-7)<br/>Intrinsic safety "i" (IEC 60079-11)<br/>Type of protection "n" (IEC 60079-15)<br/>Encapsulation "m" (IEC 60079-18)<br/>General requirements (IEC 61241-0)<br/>Protection by enclosures "td" (IEC 61241-1)<br/>Apparatus for combustible dusts (IEC 61241-1-1)<br/>Electrical resistance trace heating - Part 1: General and testing requirements (IEC 62086-1)</p> |  |



The IECEX is the IEC scheme for the certification to standards for electrical equipment for explosive atmospheres.

[Information](#) | [Publications](#) | [Members' Area](#) | [Online Certificates](#) | [Contact](#) | [Home](#)

[Operational Manuals](#)  
[Enter Online Certificates](#)



- [Brdo Meeting Green Papers and Photos](#)
- New brochure:  
[English](#) :: [Russian](#) (courtesy [NANIO CCVE](#))

[Information](#) | [Publications](#) | [Members](#) | [Certificates](#) | [Contact](#) | [Home](#)  
Copyright IECEX





## IECEx Certificate of Conformity Online Registration System

[Home / Search](#)

Please select from the options available from the left of this screen

The IECEx Online Certificate of Conformity System enables:

- IECEx Certification Bodies to issue new IECEx Certificates of Conformity "On-line"
- Full Public access to consult, view and print issued IECEx Certificates
- View Statistical information
- Export data to an Excel worksheet

[> IECEx Certification Bodies click here to create or edit IECEx certificates](#) [Password Protected]

For any questions, please contact [Mr. Chris Agius](#), IECEX Secretary

© Copyright 2005 IEC, Geneva, Switzerland. All rights reserved.

[Export to MS Excel](#)

Operational manual

You can use boolean operators "AND" or "OR"

IEC

IECEX

IEC scheme for certification to standards for safety of equipment for use in explosive atmospheres (iecex scheme):

IECEX Scheme Online Certificate of Conformity

Home / Search

Views by :

Certificate ref. number

Certificate (proto.)

IECEX Cert. Body

Applicant

Applicant Location

Manufacturer location

Standard used

ExTRs

QARs

Export to MS Excel

Operational manual

Search

You can use boolean operators "AND" or "OR"

View by Certificates : (2005)

Previous Page | Next Page | First Page | Last Page | Expand | Collapse

(Year Selection: All | 2003 | 2004 | 2005)

| Certificate Reference Number | Status  | Manufacturer country     | Manufacturer name       | Protection type         | Tested Standard         | Apparatus    |
|------------------------------|---------|--------------------------|-------------------------|-------------------------|-------------------------|--------------|
| IECEX ULD 05.0001X           | Current | United States of America | Detector Electronics... | flameproof enclosure... | IEC 60079-0 (Ed.4.0)... | Open path in |
| IECEX TUN 05.0002X           | Current | Germany                  | VEGA Grieshaber KG      | Intrinsic safety        | IEC 60079-0 (Ed.3.1)... | Capacitive m |
| IECEX TUN 05.0001            | Current | Germany                  | VEGA Grieshaber KG      | Intrinsic Safety        | IEC 60079-0 (Ed.3.1)... | VEGATMET     |
| IECEX TUN 04.0024            | Current | Switzerland              | Electronic AG           | Intrinsic Safety "I"    | IEC 60079-0 (Ed.3.1)... | OPTILEVEL S  |
| IECEX TUN 04.0023            | Current | Switzerland              | Electronic AG           | Intrinsic Safety "I"    | IEC 60079-0 (Ed.3.1)... | Level Senso  |
| IECEX TSA 04.0019X           | Current | United Kingdom           | Joy Mining Machinery    | Ex ia                   | IEC 60079-0 (Ed.3.1)... | RS20s Shiel  |
| IECEX TSA 04.0013X           | Current | Sweden                   | Saab Rosemount Tank ... | Ex d [ia]               | IEC 60079-0 (Ed.4.0)... | Rosemount t  |
| IECEX TSA 04.0012X           | Current | United Kingdom           | Joy Mining Machinery    | Ex ia                   | IEC 60079-0 (Ed.3.1)... | RS20s 386S   |
| IECEX TSA 04.0008X           | Current | United Kingdom           | Joy Mining Machinery... | Ex ia                   | IEC 60079-0 (Ed.3.1)... | RS20s Core   |
| IECEX TSA 04.0006X           | Current | Sweden                   | Saab Rosemount Tank ... | Ex ia                   | IEC 60079-0 (Ed.3.1)... | Rosemount t  |
| IECEX SIR 04.0047            | Current | United Kingdom           | Joy Mining Machinery... | ia                      | IEC 60079-0 (Ed.3.1)... | RS20s Buffe  |
| IECEX SIR 04.0045            | Current | United Kingdom           | Joy Mining Machinery... | Intrinsically Safe      | IEC 60079-0 (Ed.3.1)... | RS20s Cable  |
| IECEX SIR 04.0044            | Current | United Kingdom           | Joy Mining Machinery... | Intrinsically safe      | IEC 60079-0 (Ed.3.1)... | RS20s Dump   |
| IECEX SIR 04.0042            | Current | United Kingdom           | Joy Mining Machinery    | Intrinsically safe      | IEC 60079-0 (Ed.3.1)... | RS20s Trans  |
| IECEX SIR 04.0022X           | Current | United Kingdom           | Joy Mining Machinery    | Flameproof              | IEC 60079-0 (Ed.3.1)... | Type 50000   |
| IECEX SIR 04.0021            | Current | United Kingdom           | Joy Mining Machinery... | Intrinsic Safety        | IEC 60079-0 (Ed.3.1)... | RS20s Shiel  |
| IECEX SIR 04.0016            | Current | United Kingdom           | Joy Mining Machinery... | Intrinsic safety        | IEC 60079-0 (Ed.3.1)... | RS20s Core   |
| IECEX SIR 04.0015            | Current | United Kingdom           | Joy Mining Machinery... | Intrinsic Safety        | IEC 60079-0 (Ed.3.1)... | RS20s Barri  |
| IECEX SIR 04.0010            | Current | United Kingdom           | Joy Mining Machinery... | Intrinsic Safety        | IEC 60079-0 (Ed.3.1)... | Ram Transd   |

Sample

Start

Micros...

STAN...

Adobe...

IECE...

9:17 AM



## IEC scheme for certification to standards for safety of equipment for use in explosive atmospheres (iecex scheme):

## IECEx Scheme Online Certificate of Conformity

[Home / Search](#)[Views by :](#)

[Certificate ref. number](#)  
[IECEx Cert. Body \(ExCB\)](#)  
[Applicant](#)  
[Applicant Location](#)  
[Manufacturer location](#)  
[Standard used](#)  
[ExTRs](#)  
[QARs](#)

[Export to MS Excel](#)[Operational manual](#)  

You can use boolean operators  
"AND" or "OR"

View by **ExCB : (All)**[Previous Page](#) | [Next Page](#) | [First Page](#) | [Last Page](#) | [Expand](#) | [Collapse](#)(Year Selection: [All](#) | [2005](#) | [2004](#) | [2003](#))

| Year   | Issuer | Issue Date | Certificate No | Status | Manufacturer | Apparatus |
|--------|--------|------------|----------------|--------|--------------|-----------|
| ▼ 2005 | 75     | ▶          | BAS            |        |              |           |
|        | 1      | ▶          | BKI            |        |              |           |
|        | 9      | ▶          | BVS            |        |              |           |
|        | 14     | ▶          | CSA            |        |              |           |
|        | 8      | ▶          | ITS            |        |              |           |
|        | 3      | ▶          | KEM            |        |              |           |
|        | 1      | ▶          | KGS            |        |              |           |
|        | 21     | ▶          | LCI            |        |              |           |
|        | 1      | ▶          | NEM            |        |              |           |
|        | 27     | ▶          | PTB            |        |              |           |
|        | 12     | ▶          | SIM            |        |              |           |
|        | 48     | ▶          | SIR            |        |              |           |
|        | 35     | ▶          | TSA            |        |              |           |
|        | 10     | ▶          | TUN            |        |              |           |
|        | 6      | ▶          | UL             |        |              |           |
|        | 6      | ▶          | ULD            |        |              |           |
| ▶ 2004 | 133    |            |                |        |              |           |
| ▶ 2003 | 14     |            |                |        |              |           |
|        | 424    |            |                |        |              |           |



IEC  
Conformity Assessment Board

IECEX Management Committee  
(ExMC)

IECEX Executive  
(IECEX Officers)

IECEX Testing  
and Assessment Group  
(ExTAG)





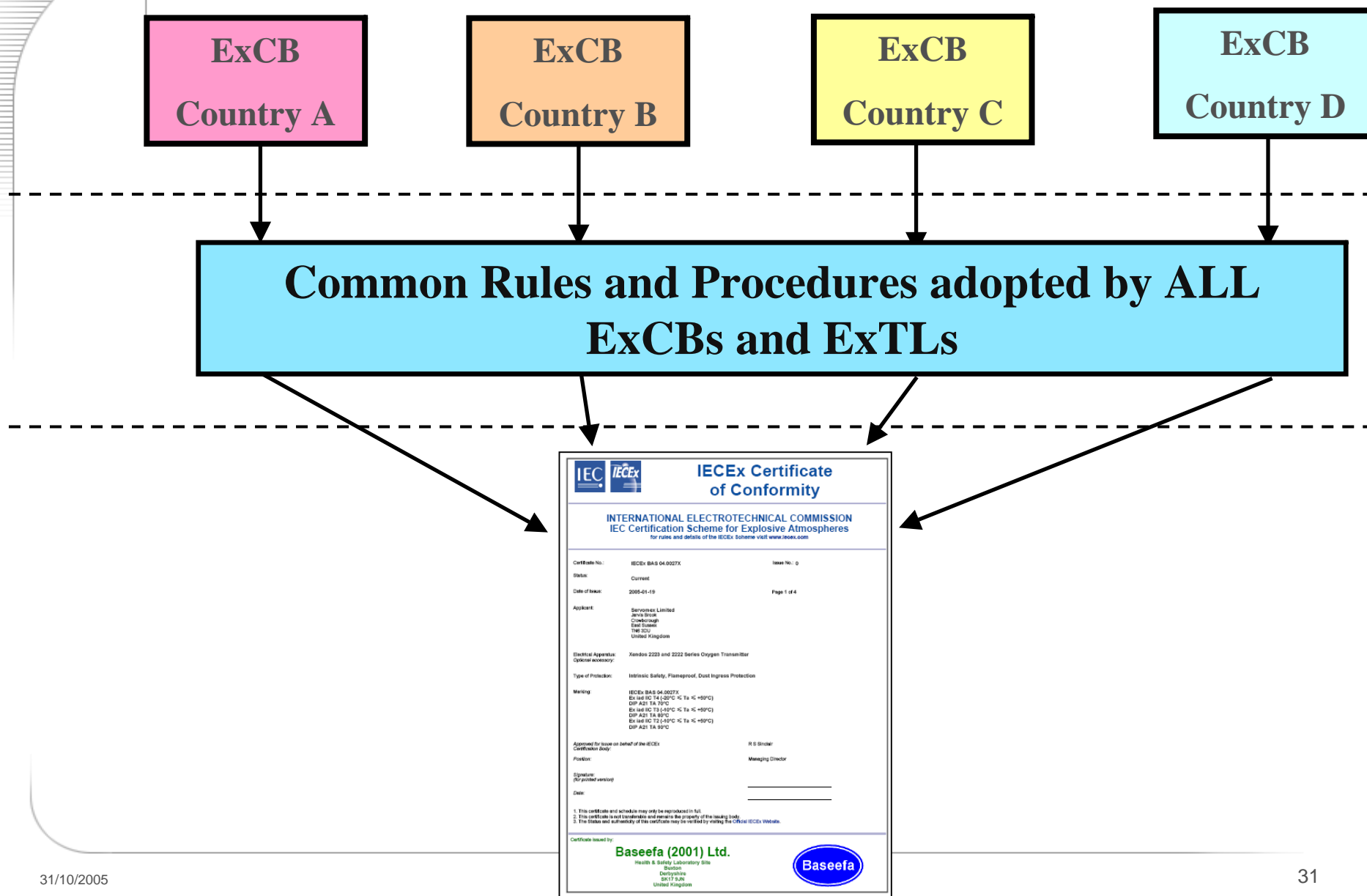
- ▶ Self Funded to cover costs
- ▶ Operates on a cost recovery basis, not set out to generate profits
- ▶ IECEx Management appoint an IECEx Treasurer to oversee ALL matters of Finance for the Scheme
- ▶ IECEx accounts are subject to Swiss Law regarding reporting and annual auditing
- ▶ IECEx is in a sound financial position.
- ▶ Significant points
  - ▶ Shrinking of Voluntary resources – Major Scheme Issue
  - ▶ IECEx intends to replace reliance on annual dues with User Pay
  - ▶ Scheme Integrity and growth require resourcing
  - ▶ Published [Schedule of Fees](#)





# **Why Should I be confident when purchasing Ex products covered by an IECEx Certificate of Conformity?**

# The IECEx Way for Ex Certification



- ▶ **All** Test Laboratories and Certification bodies are assessed
- ▶ Peer Assessment – Foundation
- ▶ Assessment to
  - ▶ ISO/IEC 17025 (Assessment of Test Laboratories)
  - ▶ IECEx Rules, IECEx 02
  - ▶ IECEx TGDs (Technical Guidance Documents)
  - ▶ IEC/ISO Guide 65 (Assessment of Certification Bodies)
- ▶ Implementation of IECEx Rules, Operational Procedures and decisions
- ▶ ExCB Ability to audit Ex Quality Management Systems
- ▶ Reports prepared
  - ▶ Sites Assessment, TGD, 17025, Guide 65
  - ▶ Only Compliant Reports issued for voting on new bodies

# Summary of IECEx Assessment Records

**Retained by  
IECEX  
Secretariat**

**Original  
Application  
Information  
+ Forms**

**Completed  
TGDs  
+ Check Lists**

**Site  
Assessment  
Audit Plan,  
Reports +  
Notes, eg  
Follow Up  
Actions**

**Surveillance  
Schedule and  
Information**

**Available to  
IECEX  
Member  
Bodies**

**Summary  
Voting Report  
  
Available to  
ALL IECEx  
Member  
Bodies**

**Surveillance  
information  
and reporting  
by IECEx  
Secretariat**



- ▶ Where National accreditation found to comply with IECEx requirements
  - ▶ 6 monthly check by Secretariat on status and scope of National accreditation
  - ▶ Internal auditing by ExCB and ExTL
  - ▶ Notification of any changes, eg re-location, ownership, loss of key personnel etc
  - ▶ 5 Year re-assessments
  
- ▶ Where Body does not have acceptable national accreditation
  - ▶ Annual surveillance visits by an IECEx Assessor
  - ▶ Notification of any change eg re-location, ownership, loss of key personnel etc
  - ▶ 5 Year re-assessments
  - ▶ Where ExTL has national accred. But ExCB does not – annual surveillance shall be conducted

# Surveillance of the IECEx System



- ▶ Dedicated Technical Secretariat with the role of Scheme CEO
- ▶ Secretariat reports to IECEx Chairman and Officers between meetings and to full IECEx Management Committee (ALL Member Countries) at Annual meetings
- ▶ IECEx Constitution rules require the full Management Committee (ALL Member Countries) to meet at least annual
- ▶ Annual meetings of Technical Committee, ExTAG
- ▶ Constant monitoring of the Scheme, including industry inquiries by the IECEx Secretariat and Officers.
- ▶ IECEx Chairman and Secretariat report TWICE per year to the IEC Conformity Assessment Board (12 Member IEC Board) at meetings in June and October
- ▶ Any IECEx Member Country may request a change or improvement.



IECEx Continual strive to be  
the Global Centre of  
Excellence in the Ex Field